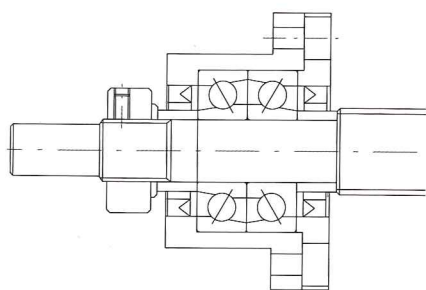
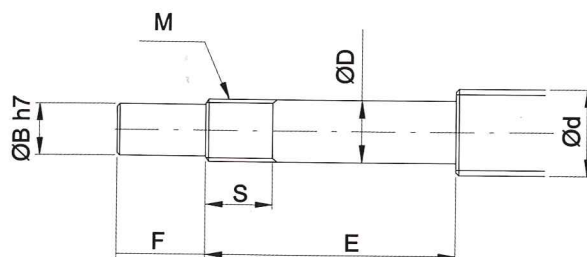
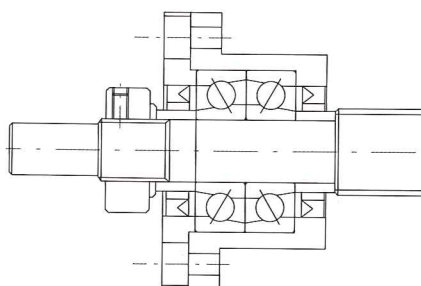


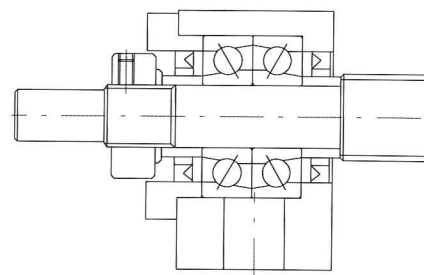
建議軸端加工尺寸 (固定側) .....FK,EK,AK型  
 Recommended shaft end shape( Fixed-side)  
 for Support Units types FK,EK,AK



FK型  
Type FK



FK型  
Type FK



EK,AK型  
Type EK,AK

單位/Unit : mm

型號 Support unit model No.			滾珠螺桿軸外徑 Ballscrew shaft OD	軸端部外徑 Shaft support portion OD				公稱螺紋 Metric screw thread	
FK型 Type FK	EK型 Type EK	AK型 Type AK	d	D	B	E	F	M	S
FK05	EK05	-	8	5 -0.005 -0.012	4	25	6	M5×0.5	7
FK06	EK06	-	8	6 -0.005 -0.012	4	28	8	M6×0.75	8
FK08	EK08	-	10/12	8 -0.005 -0.012	6	32	9	M8×1	10
FK10	EK10	AK10	12/14/15	10 -0.005 -0.012	8	36	15	M10×1	11
FK12	EK12	AK12	14/15/16	12 -0.005 -0.012	10	36	15	M12×1	11
FK15	EK15	AK15	18/20	15 -0.005 -0.014	12	47	20	M15×1	13
FK17	-	-	20/25	17 -0.005 -0.014	15	58	23	M17×1	15
FK20	EK20	AK20	25/28/30	20 -0.005 -0.014	17	62	25	M20×1	17
FK25	-	-	30/32/36	25 -0.005 -0.014	20	76	30	M25×1.5	20
FK30	-	-	36/40	30 -0.005 -0.015	25	72	38	M30×1.5	25